

## Introduction:

Congratulations on purchasing the Proton Pack: Amplified Sound Board, the only Proton Pack sound package you will ever need!

Pack Sound Board features:

- 2x10W stereo audio amplifier (Class D very battery efficient amplifier)
- Works with battery voltages from 9V to 14V
- Easier wiring with multiple battery connection screw terminals to be used to distribute your single battery to other light kits
- Stereo line-in to connect your own MP3 player
- Works with separate switches or switches already being used in other light controller kits. Does not require new switches to be installed.
- Additional combined signal and power connectors for future Pack and Wand light kits to further simplify wiring (just plug in a single cable)

The sound board also has a couple of configuration switches on the board to select between four main modes of operation:

- 1) Movie Pack Sounds
- 2) Movie Pack sounds with Interactive Features
- 3) TVG Pack sounds, cycle through 8 different TVG pack sounds
- 4) TVG Proton Pack Only sounds timed to match R2DEVO

One example of the Interactive movie sounds: fire soon after you hear Slimer and you get a comment from one of the guys when you finish firing such as Ray saying "Now that wasn't such a chore", or Peter saying "Whoa, nice shootin Tex"

TVG Pack sounds include Proton Stream, Boson Dart, Slime Blower, Slime Tether, Stasis Stream, Shock Blast, Overload Pulse and Meson Collider. The appropriate hum (Proton, Slime, Stasis or Overload depending on the pack sound currently selected) is controlled by a separate HUM enable configuration switch on the sound board.

The TVG Pack sounds mode also keeps track of the pack's "temperature" and will start beeping when overheating and will auto-vent the pack when it gets too hot. You can also manually vent the pack to cool it down sooner.

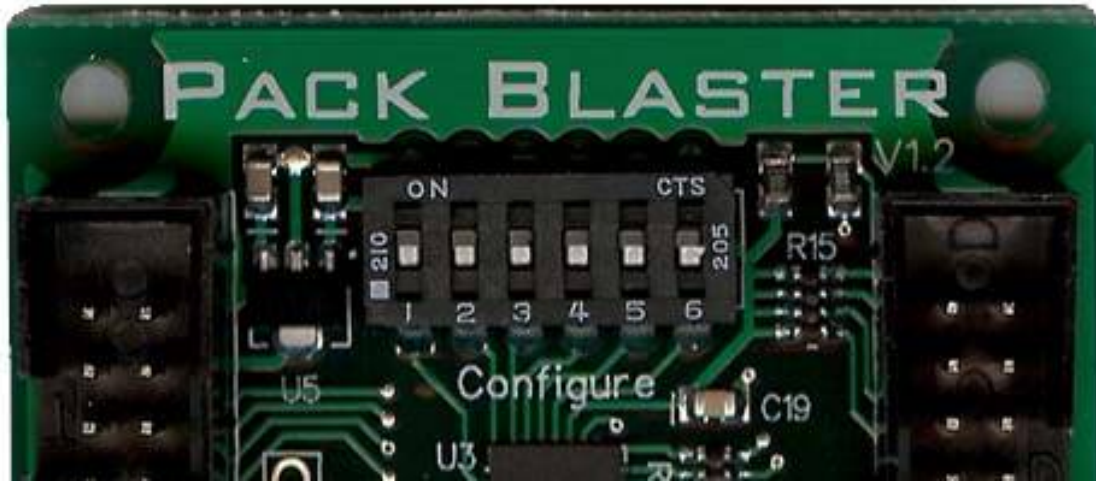
The heating for mode 4 has been adjusted to match the R2DEVO lights. The pack does not "remember" how long it has been since the last firing, so you always get up to 12 seconds of firing before overheating.

Only four switch inputs are needed for dynamically controlling the many included sounds:

1. **PowerUp**  
Controls the Pack power up and power down sounds
2. **Fire**
  - a. Press and hold for continuous firing sounds, like the Proton Stream
  - b. Press, hold and release for single shot sounds, like the Boson Darts in either TVG sounds configuration
  - c. Quickly tap to switch between different TVG packs in TVG Pack Sounds configuration
3. **Song**  
When this input changes, the Ghostbusters theme song will start to play. This works even after the pack has generated the power down sound (the battery power must still be applied to here any sounds).
4. **Vent**  
Controls the vent sound. Usually plays the full TVG vent sound in all configurations. In the TVG Pack Sounds configuration, this may make a “dry vent” sound if the pack is already cool. You must fire something for a while to heat the pack up and then the full vent sound will play.

## Configuration Dip Switch Settings:

There is a six pin Configuration Dip Switch located at the top of the Sound Board:



The switches are defined to be able to correct for different types of switches and switch connections (#1, #2 and #4), select which of 4 pack configuration will be used when the board is powered on (#3 and #5), and whether you want the pack to Hum when powered up and idling or not (#6).

Here is a table of the Input Switch controls:

Description	1	2	3	4	5	6
N.O. PowerUp Switch	OFF					
N.C. PowerUp Switch (Invert PowerUp)	ON					
N.O. Fire Switch		OFF				
N.C. Fire Switch (Invert Fire)		ON				
N.O. Vent Switch				OFF		
N.C. Vent Switch (Invert Vent)				ON		

Here is a table of the Pack Configuration selections:

Description	1	2	3	4	5	6
Movie Pack Sounds			ON		ON	
Movie Pack sounds w/Interactive Features			ON		OFF	
TVG Pack sounds, Cycle through 8 sounds			OFF		ON	
TVG Proton Pack only sounds			OFF		OFF	

Here is a table of the Hum selection:

Description	1	2	3	4	5	6
Pack Idle Hum						ON
No Pack Idle Hum						OFF

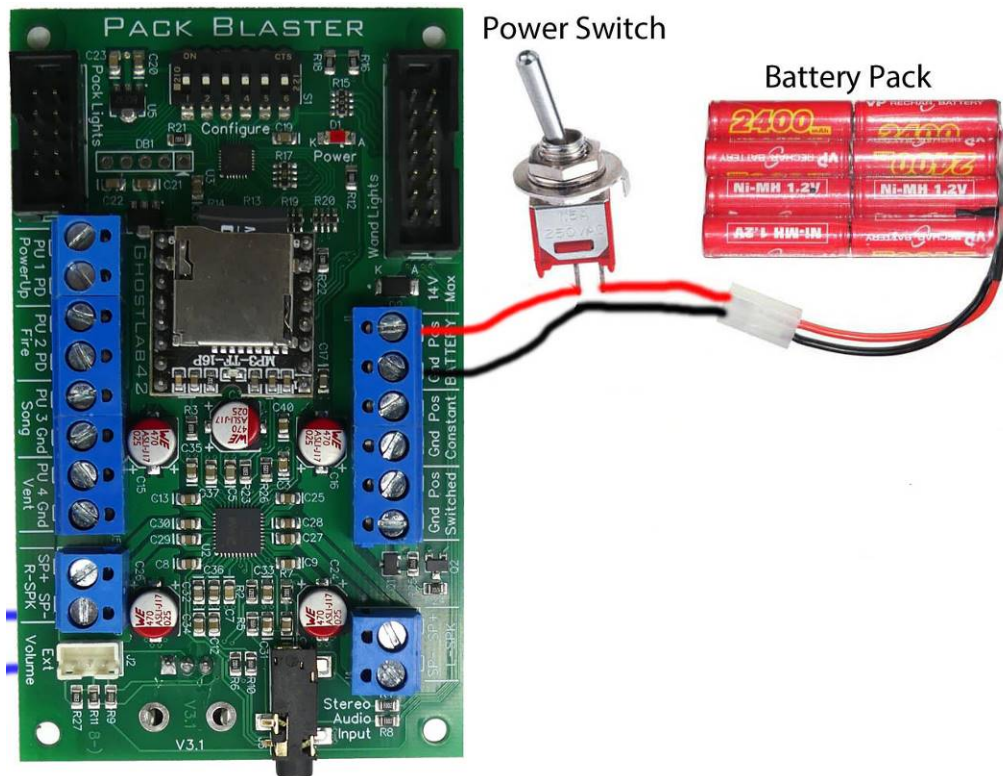
“ON” is the switch in the upper position and “OFF” is the switch in the lower position.

# Installation:

## 1. Battery Connections

The first connections to be made should be the battery connections.

Just one battery to rule them all! A single battery can be used to power up all of the boards in your pack. Ideally, the battery connections would look like this:

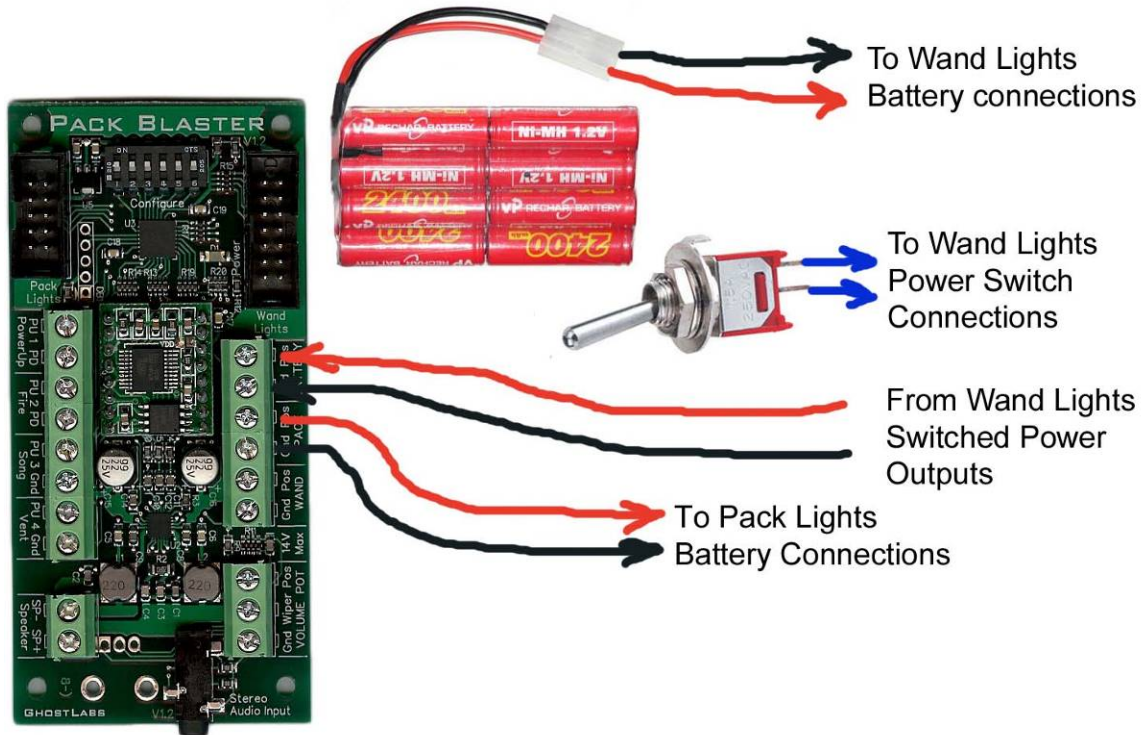


A 9V to 14V battery pack is used to power this board and also the pack and wand light kits if you have those. The battery is connected to the PackLights and WandLights boards with ribbon cables along with control signals, so no additional power wiring is needed. To simplify your wiring, the sound board has provided an additional set of screw terminals to distribute the battery voltage to the other boards and is labeled “Constant” since the battery voltage is always available when the battery is on.

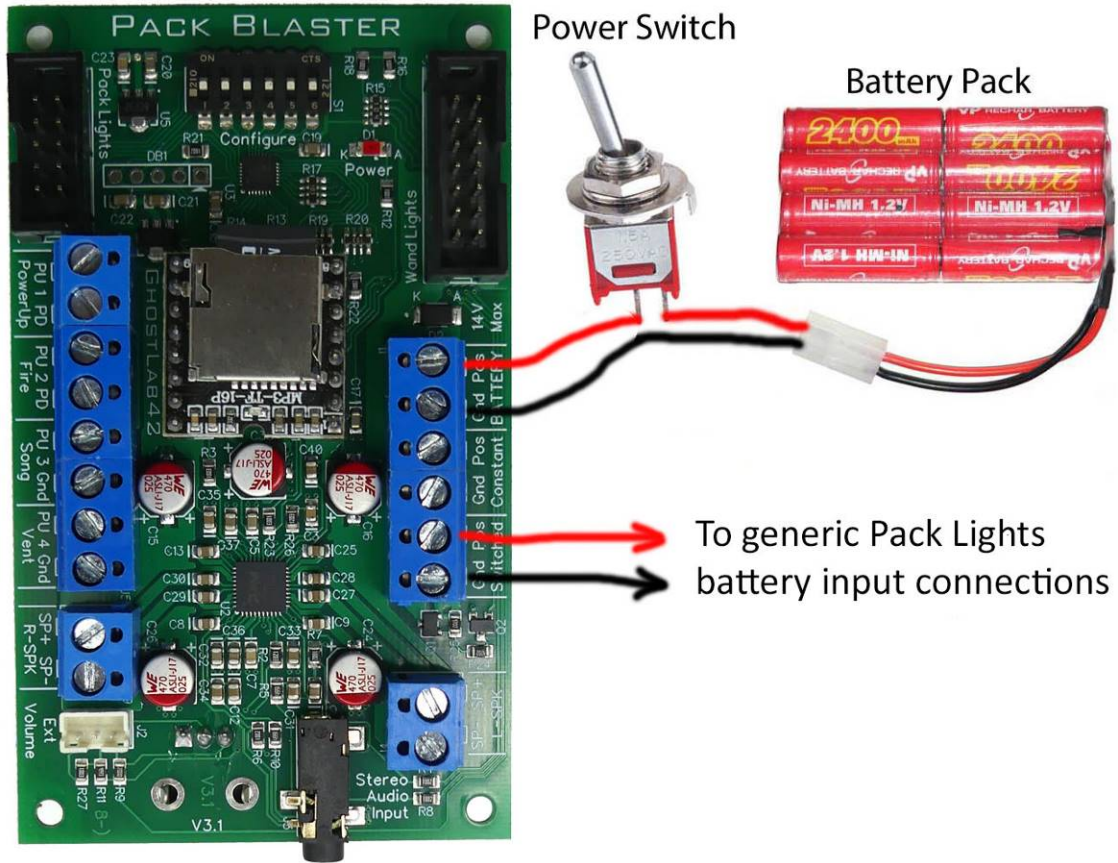
The ground connection (**Black**, negative or “-“) should be the same for all of the boards in the system and can be directly connected to the negative battery terminal: the switch only needs to control the positive connection (**Red**, or “+“) to the battery. There is nothing wrong with having the switch control both the positive and the negative connections to the battery, just more connections to wire and a more expensive switch would be needed.



Some wand light kits may already have power connections wired up and have switched power output to supply battery power to other boards. You do not have to rewire those packs to work with this board, you can use that switched power from that wand lights board as the main battery connection to the sound board:



A third set of battery connections are available and are usually used with a generic Pack Lights board that will always sequence when power is applied. The sound board will turn on the voltage whenever it decides the pack lights should be on. These battery terminals are labeled “Switched” and should never have a battery connected directly to them.



Power Switch

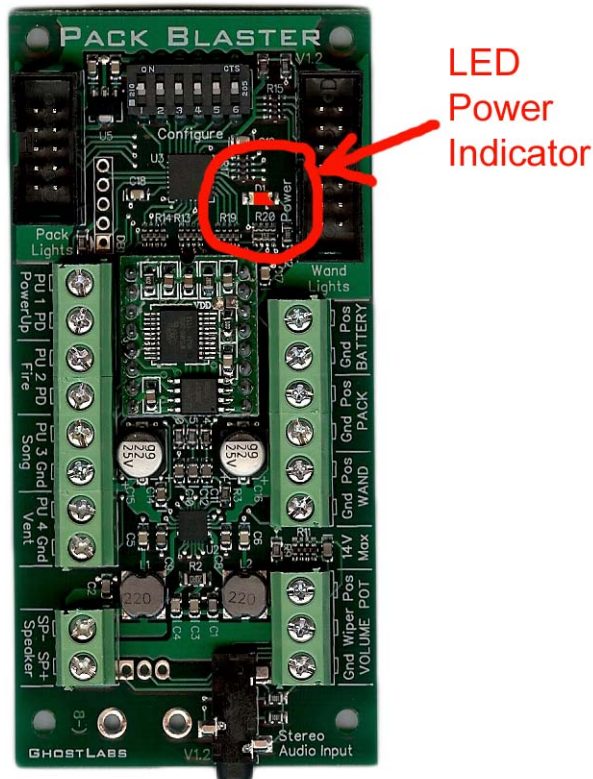
Battery Pack

To generic Pack Lights  
battery input connections

## 2) Test the Battery Power Connection

Now that you have the power hooked up, you can test the connections to make sure that they are working.

To indicate that the Sound board is getting power, a **Red** “Power” LED indicator will light up when battery voltage is applied:



The lights kits should work just like before you wire in the battery connections to the Sound Board. Verify that the Power Switch does turn on and off power to the sound board (look at the power indicator LED) and all of the light boards. Also verify that the lights kits are operating properly before you go to the next step.

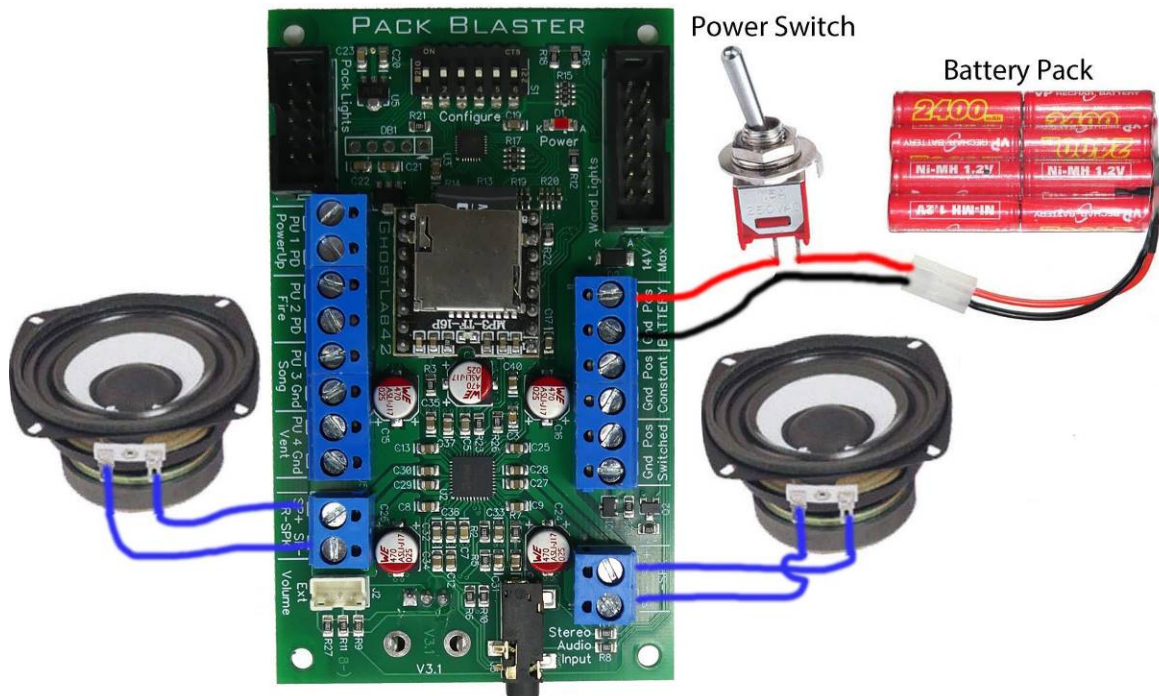
When verified, turn off the power and proceed to the next step.



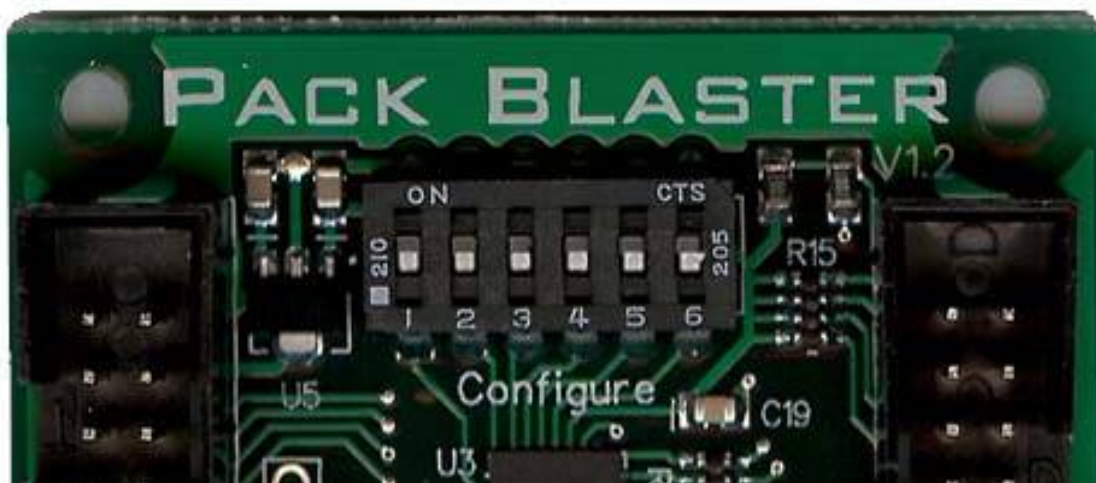
### 3. Connect a pair of Speakers

With the battery power switched off, connect 8 ohm speakers up to both speaker terminal connections in the lower left hand and right hand screw terminals marked with “R-SPK”, “L-SPK” and each pair of terminals are moarked with “SP+” and “SP-“.

The Phase of the two speakers may be important (depending on where and how they are mounted), so connect the “+” and “-“ terminals the same way for each speaker.



To make sure the sound board does not try to output any sounds, set all six of the Configuration Dip Switches to the OFF position (all switches toggled towards the bottom of the board):



#### *4. Test the Speakers*

Set the Configuration switches all off. This tells the Sound Board not to make any sounds if no switches are connected.

Set the volume control to a mid level. There is a detent in the middle of the volume adjustment range. Set to this volume and sounds should not be too loud.

##### *With an MP3 player*

The easiest way to test the board is to play music through the Stereo Audio input. Connect the headphone outputs from your MP3 player into the stereo Audio input jack at the bottom of the Sound Board. You will need a cable (not supplied) with 3.5mm stereo plugs on both ends to make this connection.

Plug in the MP3 player and start music playing. Set the MP3 player's volume to a mid level. Now turn on the Sound Board. You should be able to hear the music playing through the Sound Board connected speaker.

The MP3 player's volume can be adjusted to make the music louder or softer. The Sound board's volume control can also adjust the sound level. This allows you to "mix" the two sound sources together.

##### *Without an MP3 Player*

Power on the Sound board (verify power is applied by checking that the **Red** Power LED is on). No sounds should be coming from the speaker.

Now take a piece of wire and short the Song screw connections together ("PU" and "Gnd"). This will start the Theme song playing.

Adjust the volume control to make sure you can adjust the volume from completely off, to crazy loud. At the maximum volume position, some speakers may go into distortion. There is a significant amount of power available from this audio amplifier and smaller speakers may have a hard time creating very loud lower frequency sounds.

When the song ends, to get it started again, remove and re-apply the wire shorting the two Song connections together.

The song will play until it finishes, power is turned off or some other sound (Power Up, Power Down, Fire or Vent) is requested.

#### *4. Connect Up to Four Sound Activation Switches*

You can use separate switches or the ones that are already hooked to your light kits or the ones connected to a sound module you may be replacing. The sound board will work with any of these switches that you already have.

You really need at least one switch (Fire) to appreciate having this board, but you can have even more fun with up to four control switches:

Fire: Needed to capture ghosts!

Power Up/Down: Controls the pack power up and down sounds

Song: The movie theme song will play whenever this switch changes

Vent: Plays a vent sound when activated.

Type of switches: Don't be concerned about whether your pushbutton switch is an N.O or an N.C. style - it doesn't matter! If the sounds play when the switch is in the wrong position or isn't pressed, just change one of the configuration switches at the top of the board. No changes in switches or wiring are needed!

For separate switches, or separate connections on a multi-pole type switch (behaves like two or more switches connected together), two wires are needed to be connected for each switch. For shared switches, only a single wire is needed to connect the changing signal into the sound board.

The default setup for configuration Dip Switches #1, #2 and #4 is Off (downward) and is designed to support N.O. (normally open) style switches. If your switches are N.C. (normally closed) style, just move the associated Configuration Dip Switch On to invert the incoming signal.

Configuration Dip Switch #1 set ON will invert the "PowerUp" input.

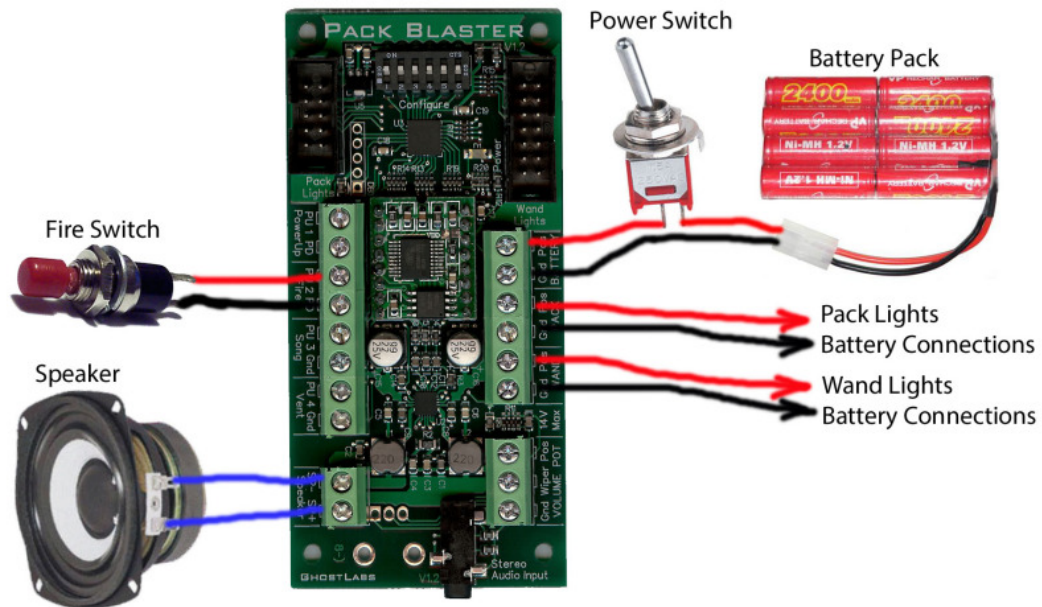
Configuration Dip Switch #2 set ON will invert the "Fire" input.

Configuration Dip Switch #4 set ON will invert the "Vent" input.

The "Song" input does not have an associated invert control since a change in the switch is needed to start a song and both N.O. or N.C. switches will change when they are pressed.

*For separate switches:*

Shown below is a separate fire switch that is only connected to the sound board, not a Wand Lights kit:



The Fire switch connections are labeled “PU” and “PD”. One connection is made from each of these to one side of the switch. The order is not important and if the wire connections are swapped, the operation will still be the same.

With all six of the Configuration Dip Switches set to the off position (downwards), power the board and no sounds should come out.

Since we do not have the PowerUp connection made yet, turn on Configuration Dip Switch position #1 and the pack start up sound should play.

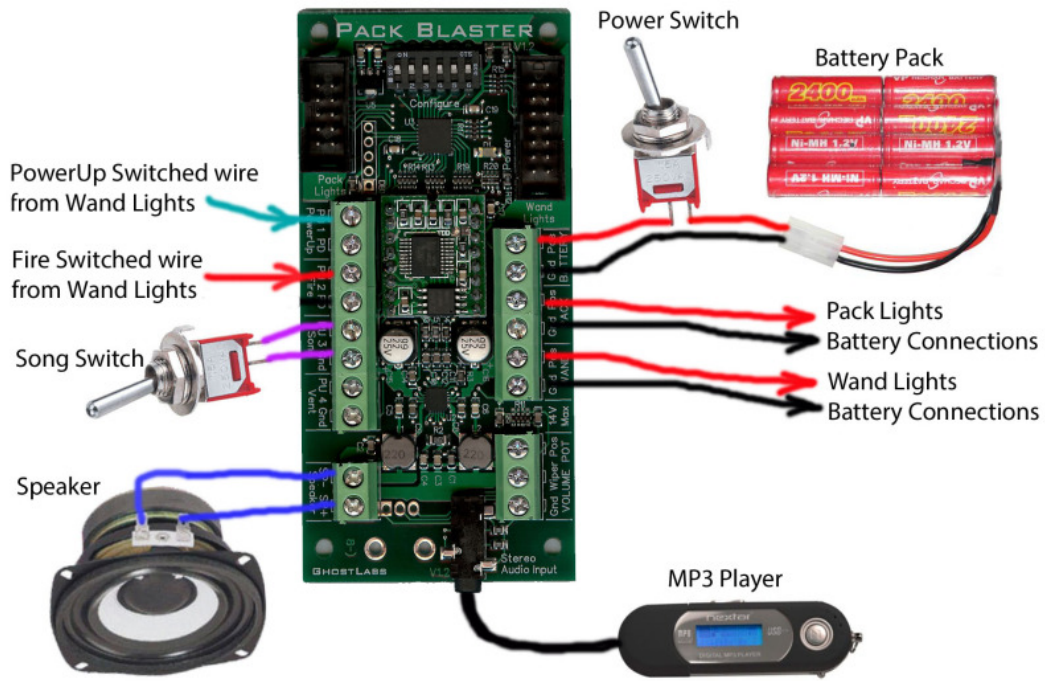
If the pack should not play the stream sound until you press the fire switch. Test this out. The default is for an N.O. (Normally Open) switch. If you have a N.C. (Normally Closed) switch, the stream sound will play right after the pack startup sound and will stop when you press the button. To fix this, move Configuration Dip Switch #2 to the ON position. This will invert the Fire button response.

Configure and test each switch one at a time.



*For shared switches:*

Shown below are a shared PowerUp and a shared fire switch that is used by both the wand lights kit and the sound board. Also shown is a separate song switch that is only used by the Sound Board.:



Since we are sharing the battery, only the live or switched side wire from the shared switches needs to be brought back to the sound board.

For the PowerUp and Fire switches (most common on wand light kits), we only need to bring back one wire from each switch and connect it to the appropriate sound board connection.

Both the PowerUp (Switch 1) and Fire (Switch 2) each of which has two screw terminals marked "PU" and "PD".

- "PU" is used for switched wires that normally sit at a higher voltage (because they have a "Pull Up" resistor), and
- "PD" is for switched wires that normally sit at a low voltage (because they have a "Pull Down" resistor), like the R2DEVO lights

If you're not sure which wire to use or what switch you have, no problem! Just hook one wire to one of the two inputs and see if it can activate the sound in one of the positions. If it doesn't (because the sound is always on or always off) just move the wire to the other input. You can try that with each of the two wires.

If the switch does allow control of the sound but the operation is backwards, for

example if the fire button always fires except when pressed, just flip the associated Configuration Dip Switch on the sound board and it will make things right! (Dip Switch #1 for PowerUp, Dip Switch #2 for Fire and Dip Switch #4 for Vent).

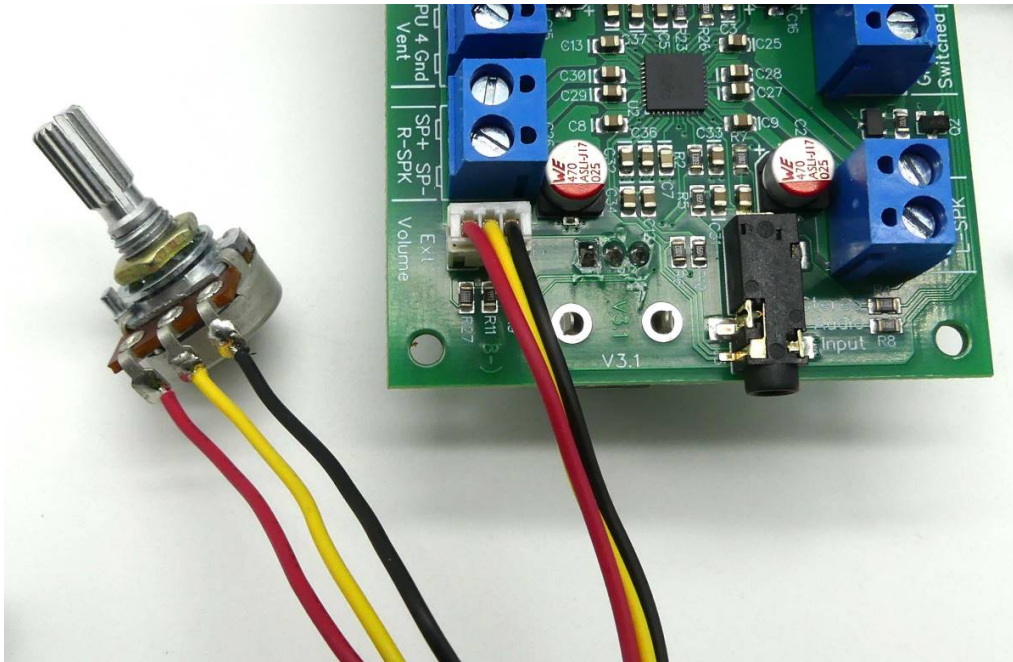
If you have a separate switch that isn't used in the wand lights, like the Song switch, just connect the two wires to the two sound board inputs and you are done!

## 5. *Volume Control*

There is a volume control pot built into the back side of the bottom of the board. This allows mounting of the board to the pack mother board and the volume control shaft can come through a small hole drilled in the motherboard allowing easy external volume adjustment.

If you want a remote volume control you can remove that potentiometer (cut or desolder) from the board and connect an external 50K audio taper potentiometer back to the JST PH 2.0mm 3-pin connector on the lower left hand side of the sound board. You could use the potentiometer that was removed from the board but it is not designed to be mounted to a panel.

The external volume control connections are designed to work with really long wires and won't affect your sound quality!

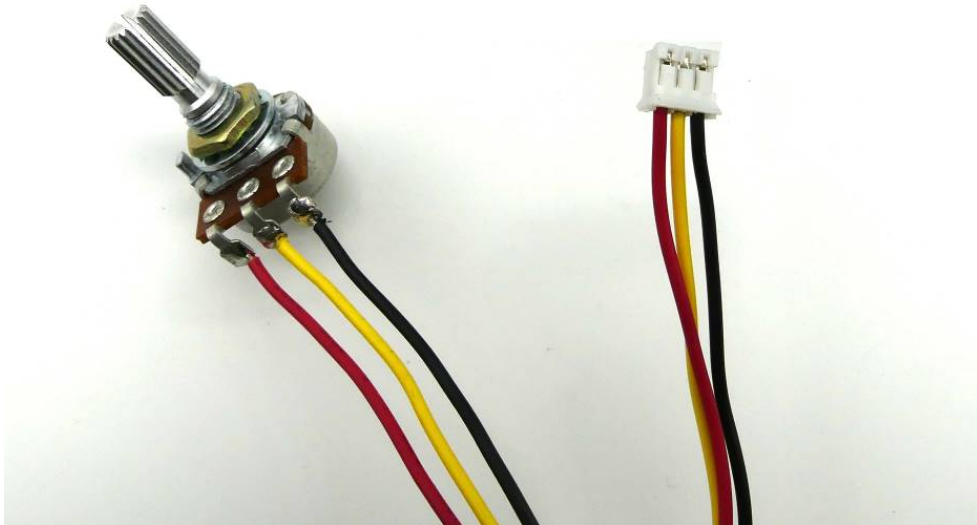


The board uses an audio (logarithmic) taper 50K ohm potentiometer but anything from 30K to 60K will be fine. And the current is very small so most any wire gauge from 28 to 20 will work fine. A linear taper potentiometer could be used but will be much more sensitive to volume adjustments

Here is an example potentiometer that was already wired, so I did not choose the wire colors...

Red -- Ground or Common  
Yellow -- Wiper  
Black -- +3V

The connector is a 3-pin JST PH 2.0mm style.



## *6. MP3 Player Connection*

There is a black 3.5mm stereo connector at the bottom of the sound board. Just plug a cable from your MP3 player's headphone out jack to this input jack. The MP3 music volume is controlled by your MP3 player.

The MP3 stereo input is mixed in with the pack sounds, so they can play simultaneously. For example, you can have your background music playing while you fire and you can still hear both.

The MP3 volume is controlled by the MP3 player so you can make the MP3 significantly quieter or a bit louder than the pack sounds.

## FAQ:

### **What speakers will work with this board?**

A full range 8ohm speaker is recommended with a power rating of at least 10W.

If you're going to have just one speaker for each connection, a 2 or 3 way speaker like those used in car audio systems might be best. With those you get a woofer, tweeter, and a midrange speaker (if 3-way) all in one package. They're designed to function as one speaker, and can match the amp's preferred 8ohm loading.

If you want to use two speakers per connection, wire two 4-ohm speakers together in series with three connections:

- 1) From the sound board's "SP -" to the negative connection on speaker 1.
- 2) From the positive connection on speaker 1 to the negative connection on speaker 2.
- 3) From the positive connection on speaker 2 to the sound board's "SP+"

You get the largest output power (up to 10W) with an 8 ohm speaker load. It is designed to work with 4 to 8 ohm speaker loads with a bit less output power when driving the lower impedance speakers. Speaker efficiency is also a big part of how loud a speaker is, so some 4ohm speaker could be significantly louder or quieter than some 8 ohm speaker...

This board actually drives a decent amount of power into the speaker and a better speaker can definitely enable a better output sound. Some speakers may have power "ratings" of hundreds of Watts and will still provide a lot of volume with this 10W amplifier. It is significantly more powerful and enables much higher volumes than the 1/2W amplifier built into the sound modules that are typically used.

### **Do I have to use both speaker connections?**

The board is designed to drive a stereo pair of speakers. Some sounds may not sound as good if you only have a single speaker since a stereo sound file may count on different sounds out of the two speakers. If you do only want to attach one speaker, either speaker connection screw terminals may be used. For any sounds that you want to modify, you can use software like Audacity to read in the stereo file from the uSD card and convert it to mono so the same sound will go out of the left and right channels, and then save the mono file and place it back on the uSD card. This will make the sounds identical to how they were played in the previous mono version of this sound card.

### **Wire Gauge:**

What gauge wire do you recommend for running the power (I'd like to run the main power switch to the gun toggle) and sound switches to the gun? Also for the Pot meter please, and can you recommend a certain type of pot meter?

Worst case even if the norm isn't for all LEDs and sound to be on at max all at the same time and just buying one size wire, not optimizing for each segment: 2.5A total for sound

and lights, 6 feet length (out to wand) and a conservative 2% voltage drop over the length of the wire, would require #22 wire. I use #18 stranded (more flexible than single solid) and haven't had any issues at all. Overkill!

For control and potentiometer wires just about any gauge is fine since there is very little current involved.

**Distortion Board:**

In anticipation of buying a different sound kit, I purchased one of Spongeface's Distortion Fix modules. Will that be useful or obsolete with your board?

The distortion board will not be needed since the sound module and amplifier are designed to be used together with a single battery.